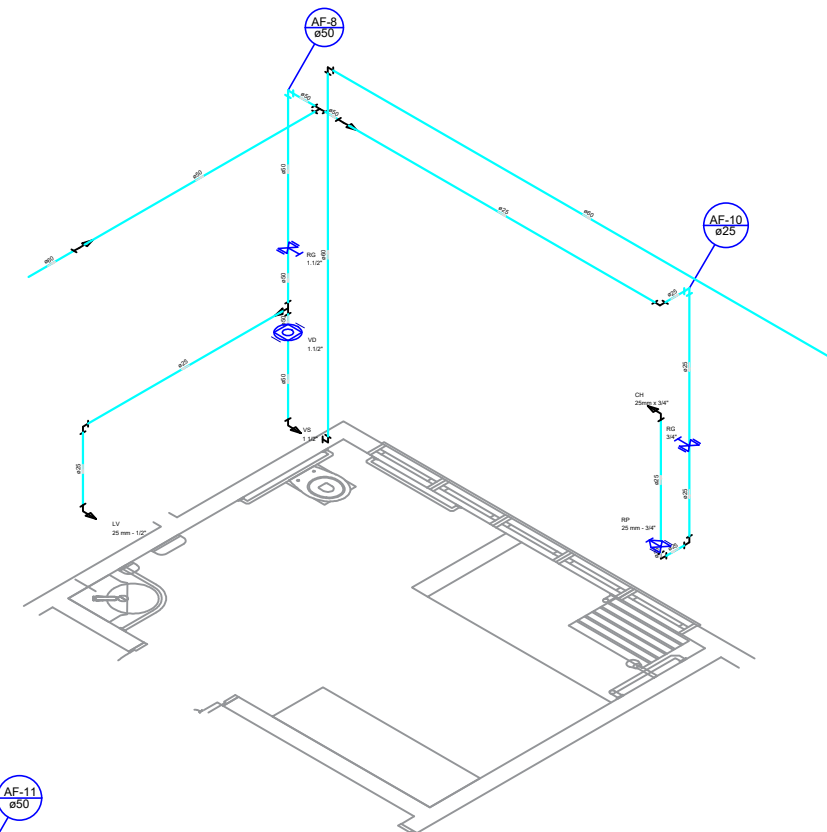
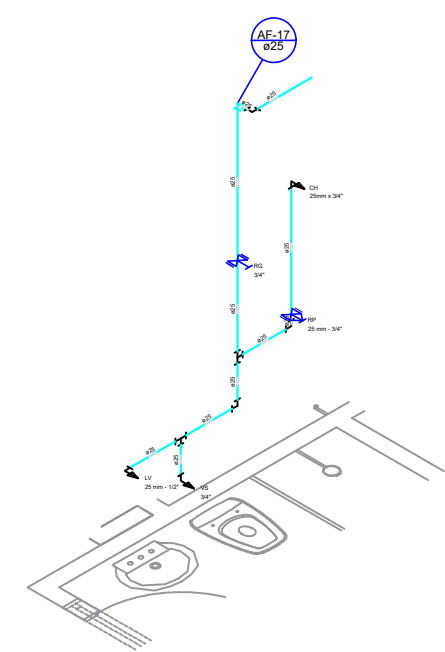


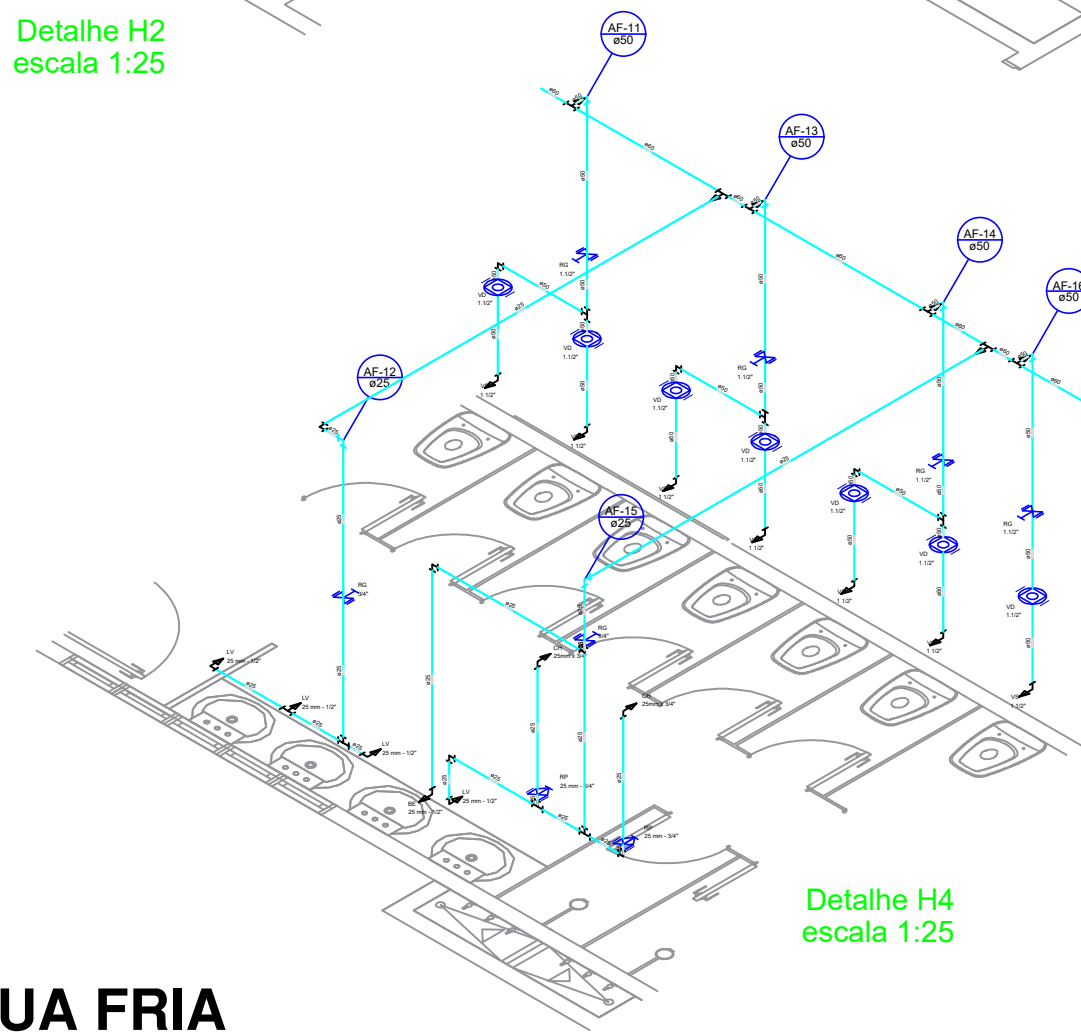
Detalhe H2
escala 1:25



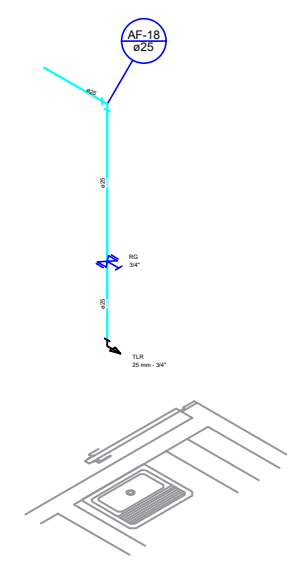
Detalhe H3
escala 1:25



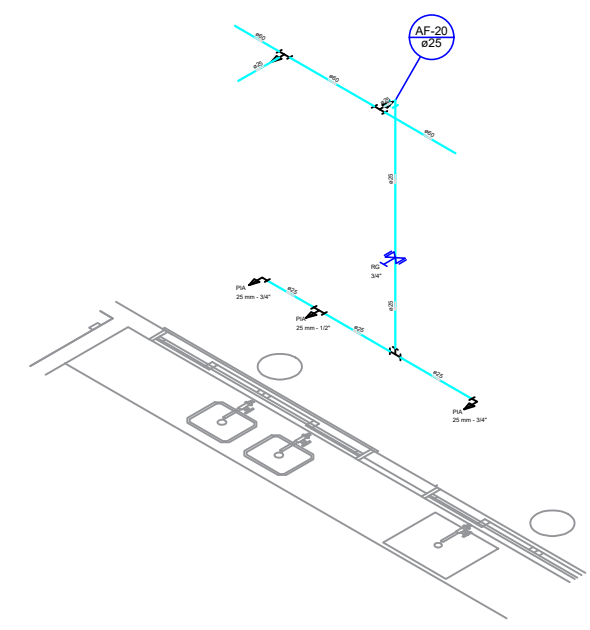
Detalhe H5
escala 1:25



Detalhe H4
escala 1:25




Detalhe H6
escala 1:25



Detalhe H7
escala 1:25

DETALHE ÁGUA FRIA

ESC: 1/250

	<p>PREFEITURA MUNICIPAL DE VÁRZEA GRANDE Av. Castelo Branco, Espaço Municipal, 2500 - Centro Sul, Várzea Grande/MT CEP 78125-700 - Fone/Fax: 65 3688 8000</p> <p>LOCALIZAÇÃO: RUA SÃO PAULO (LOT. NOVA VÁRZEA GRANDE) CEP: 78135-730 VÁRZEA GRANDE - MT</p>	<p>PROJETO: PROJETO HIDROSÂNITARIO</p> <p>OBRA: REFORMA E AMPLIAÇÃO DA EMEB JAIME VERÍSSIMO DE CAMPOS JUNIOR "JAIMINHO"</p>	<p>DATA: JULHO/2021</p> <p>UNIDADE: METRO</p>	<p>AUTOR DO PROJETO:</p> <p>MATHEUS MARCANZONI LEITE ENGENHEIRO CIVIL CREA - MT 042157</p>	<p>FOLHA Nº: 05/13</p>
---	--	---	---	--	------------------------